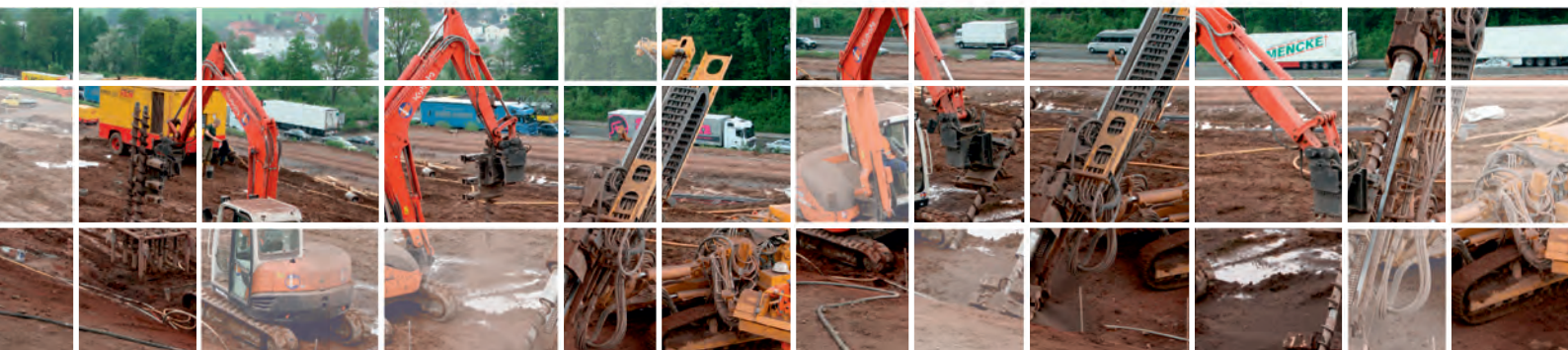


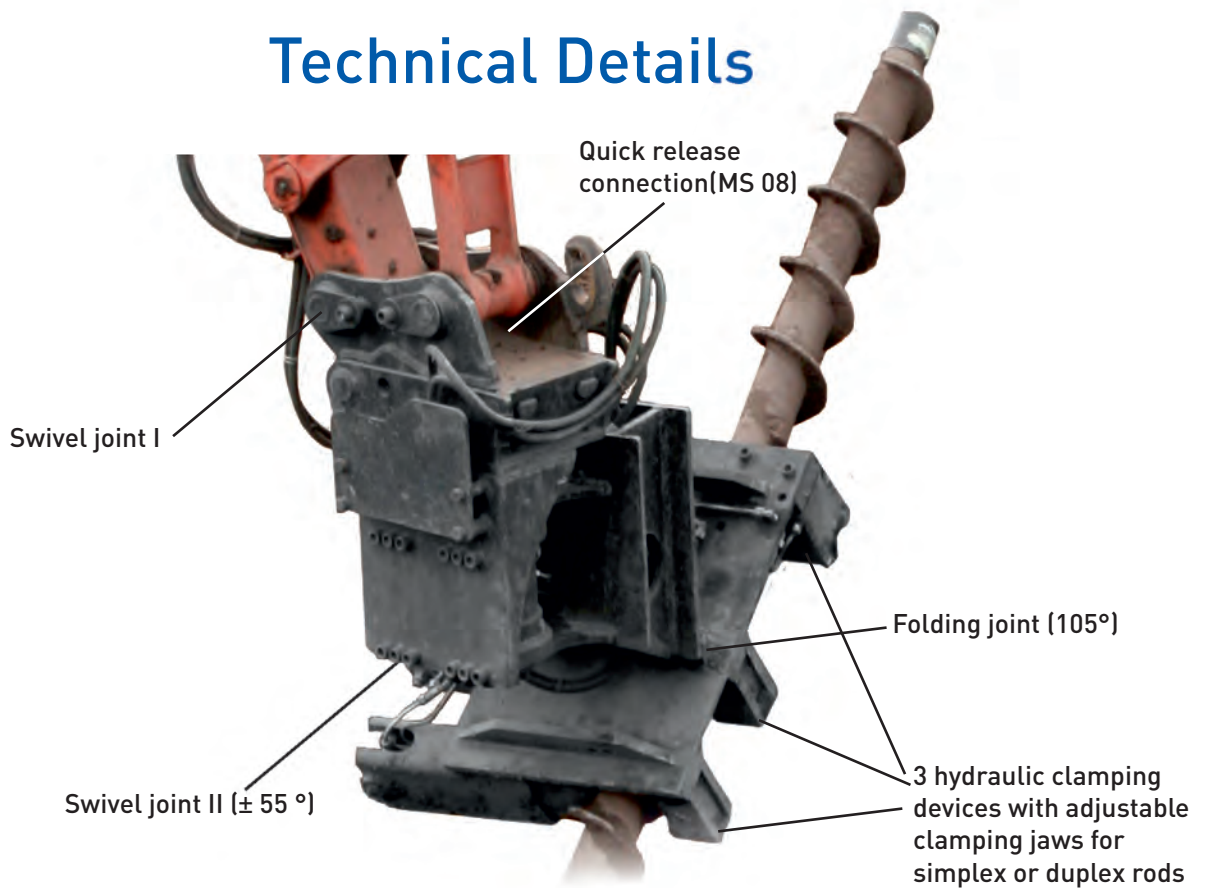
Hydraulic Casing Lifter suitable for Casing diameters up to 250 mm (simplex or duplex rods) with rotational swivel angle 0 – 110 degrees. For mounting on excavators (approx 7 tonnes).



SYSB  **HR** [®] **GMBH**

Drilling technique for the construction industry

Technical Details



Measurements

- total weight: 589 kg
- clamping force at $p_{\max} = 180$ bar: 5.000 kp
- basic equipment with quick release connection type: Lehnhoff MS 08
- control for hydraulic cylinder: on option
- casing racks on request

