

Materials Services
Infrastructure

KRUPP Rotary Head HR40.

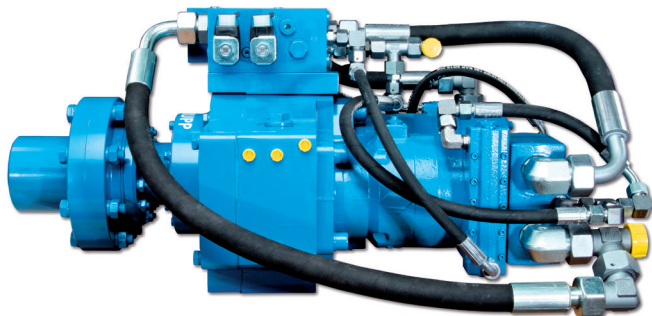


thyssenkrupp



KRUPP Rotary Head HR40

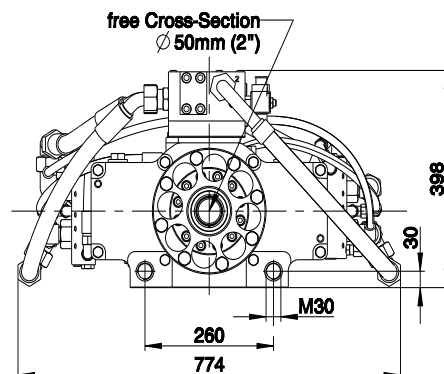
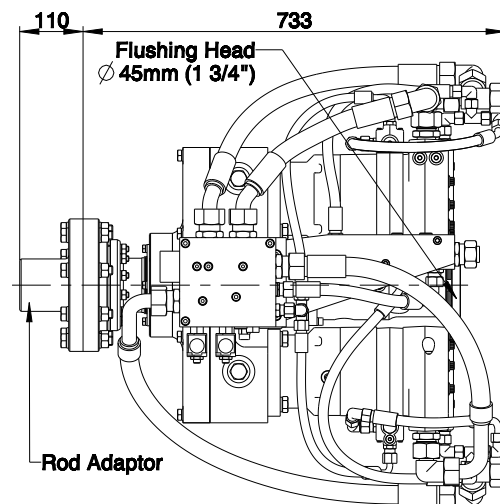
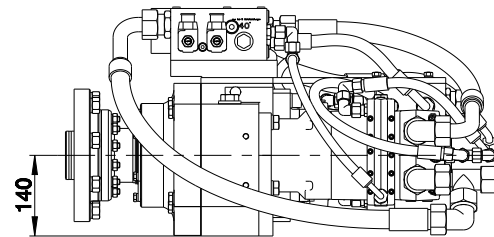
Compact design – the ideal rotary head for small and mid-size drill rigs and excavator mounted drill masts.



- The strong bearings of the hollow shaft, which are taken from our hydraulic drifters, warranty a long life time.
- Especially developed for down-the-hole hammer applications.
- Casing diameter up to 133 mm (5 inch).
- Optional: electric, hydraulic or manual changeover for the rotary drive speed.
- Options: adaptor flanges for different types of rods, casings and augers.



Main Dimensions



Weight approx. 300 kg

Retraction Force max. 150 kN

Rotary Drives

Motor-Version 670 ccm

Pressure at rotary drive		70 bar				140 bar				170 bar				205 bar			
Gear			2 nd		1 st		2 nd		1 st		2 nd		1 st		2 nd		1 st
Oil flow rate (lpm)	90	Torque (Nm)															
		Speed (rpm)															
			1,500		3,200		3,200		6,400		4,000		8,100		4,800		9,700
150		Torque (Nm)															
		Speed (rpm)															
			1,500		3,100		3,100		6,400		3,900		8,000				9,600
170		Torque (Nm)															
		Speed (rpm)															
			1,500		3,100		3,100		6,400		3,900		8,000				9,600
			107		52		105		51		104		52				48

1st gear (parallel mode), 2nd gear (serial mode)

■ Intermittend mode (max. 10% per minute)

Motor-Version HP480 ccm

Pressure at rotary drive		140 bar				200 bar				240 bar				280 bar			
Gear		4 th	3 rd	2 nd	1 st	4 th	3 rd	2 nd	1 st	4 th	3 rd	2 nd	1 st	4 th	3 rd	2 nd	1 st
Oil flow rate (lpm)	90	Torque (Nm)	1,300	2,100	3,100	4,700	2,100	3,300	4,600	7,000	2,500	3,900	5,400	8,300	3,000	4,600	6,400
		Speed (rpm)	121	80	60	40	121	80	60	40	121	80	60	40	121	80	60
150		Torque (Nm)	900	1,800	2,800	4,400	1,700	2,900	4,400	6,700	2,100	3,600	5,200	8,000	2,600	4,300	6,200
		Speed (rpm)	201	134	101	67	201	134	101	67	201	134	101	67	201	134	101
170		Torque (Nm)	800	1,600	2,700	4,300	1,500	2,800	4,300	6,600	1,900	3,400	5,100	7,900	2,400	4,100	6,100
		Speed (rpm)	228	152	114	76	228	152	114	76	228	152	114	76	228	152	114

1st gear (parallel mode), 2nd gear (parallel + 2-speed mode), 3rd gear (serial mode), 4th gear (serial + 2-speed mode)

Motor-Version HP677 ccm (standard)

Pressure at rotary drive		140 bar				200 bar				240 bar				280 bar			
Gear		4 th	3 rd	2 nd	1 st	4 th	3 rd	2 nd	1 st	4 th	3 rd	2 nd	1 st	4 th	3 rd	2 nd	1 st
Oil flow rate (lpm)	90	Torque (Nm)	1,900	3,000	4,300	6,600	2,900	4,700	6,500	9,900	3,500	5,500	7,700	11,600	4,200	6,500	9,000
		Speed (rpm)	86	57	43	29	86	57	43	29	86	57	43	29	86	57	43
150		Torque (Nm)	1,300	2,500	4,000	6,200	2,400	4,100	6,200	9,500	3,000	5,000	7,400	11,300	3,600	6,000	8,700
		Speed (rpm)	143	95	71	48	143	95	71	48	143	95	71	48	143	95	71
170		Torque (Nm)	1,100	2,300	3,900	6,100	2,200	3,900	6,000	9,300	2,700	4,800	7,200	11,100	3,400	5,800	8,500
		Speed (rpm)	162	108	81	54	162	108	81	54	162	108	81	54	162	108	81

1st gear (parallel mode), 2nd gear (parallel + 2-speed mode), 3rd gear (serial mode), 4th gear (serial + 2-speed mode)

Motor-Version HP940 ccm

Pressure at rotary drive		170 bar				200 bar				230 bar							
Gear		4 th	3 rd	2 nd	1 st	4 th	3 rd	2 nd	1 st	4 th	3 rd	2 nd	1 st				
Oil flow rate (lpm)	90	Torque (Nm)	3,300	5,200	7,400	11,300	4,100	6,500	9,000	13,700	4,700	7,300	10,200	15,500			
		Speed (rpm)	62	41	31	21	62	41	31	21	62	41	31	21			
150		Torque (Nm)	2,500	4,500	7,000	10,800	3,300	5,800	8,600	13,200	3,900	6,600	9,800	15,000			
		Speed (rpm)	103	68	51	34	103	68	51	34	103	68	51	34			
170		Torque (Nm)	2,200	4,200	6,800	10,500	3,000	5,500	8,400	12,900	3,600	6,300	9,500	14,700			
		Speed (rpm)	116	78	58	39	116	78	58	39	116	78	58	39			

1st gear (parallel mode), 2nd gear (parallel + 2-speed mode), 3rd gear (serial mode), 4th gear (serial + 2-speed mode)

Other motor versions are available

Options

2" flushing head

Top discharge preventer

Top discharge ejection bell

Drill rods, casings, bits, augers

Materials Services
Infrastructure

thyssenkrupp Infrastructure GmbH
Alte Liederbacher Str. 6
36304 Alsfeld, Germany
P: +49 6631 781-0
F: +49 6631 781-113
machinery.tkinfrastructure@thyssenkrupp.com
www.thyssenkrupp-infrastructure.com