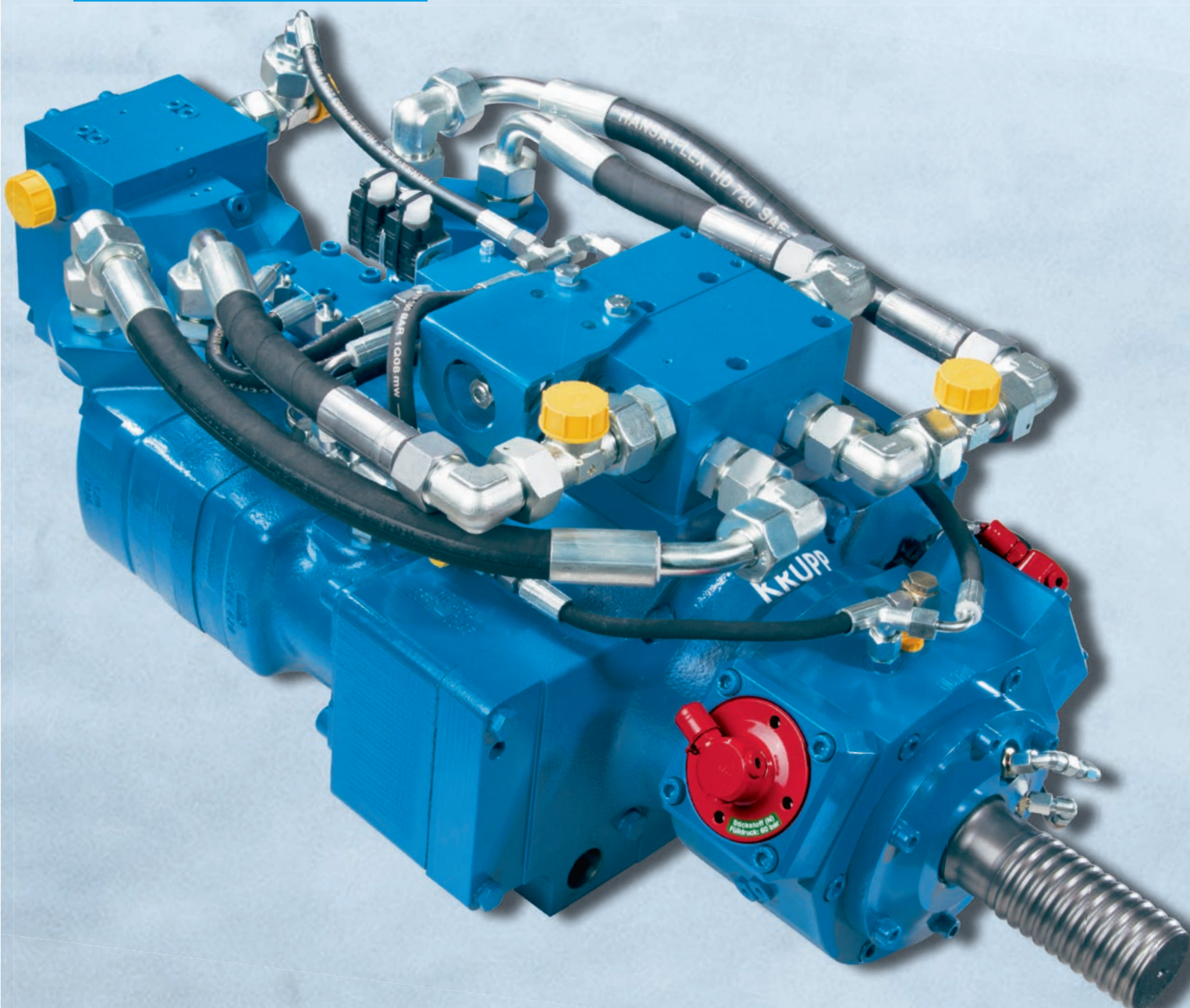


Materials Services
Infrastructure

KRUPP Drifter HB45.

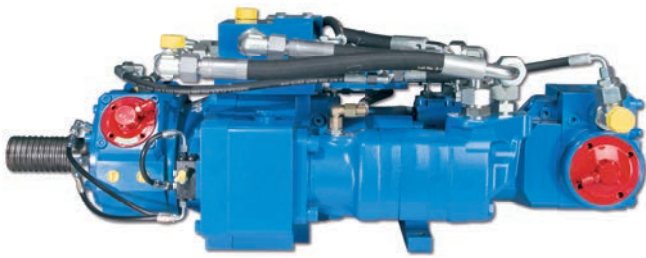


thyssenkrupp



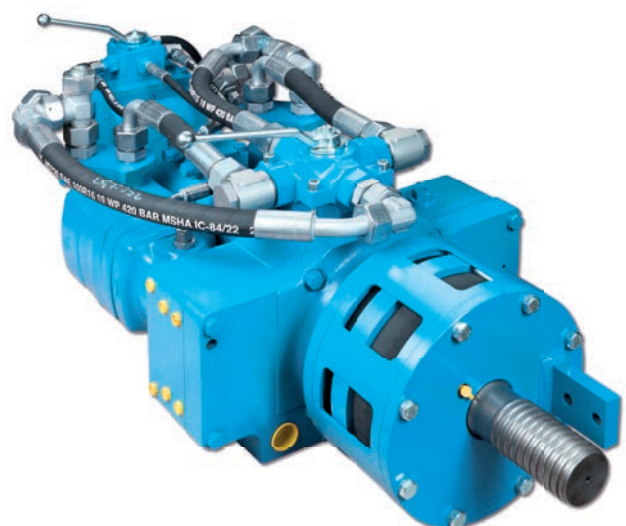
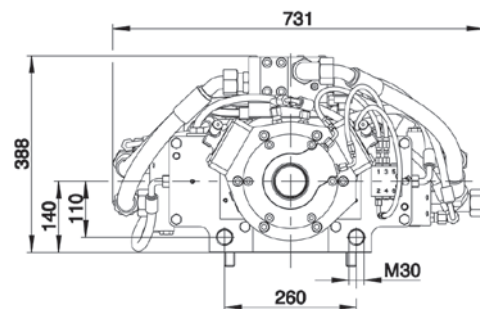
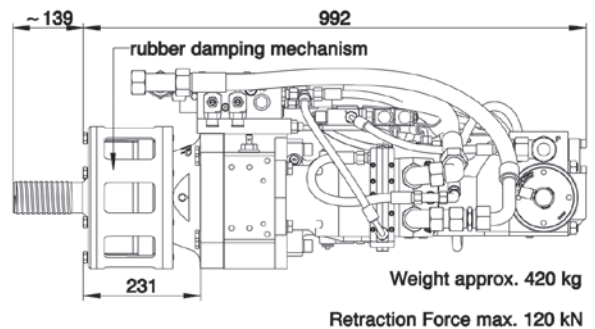
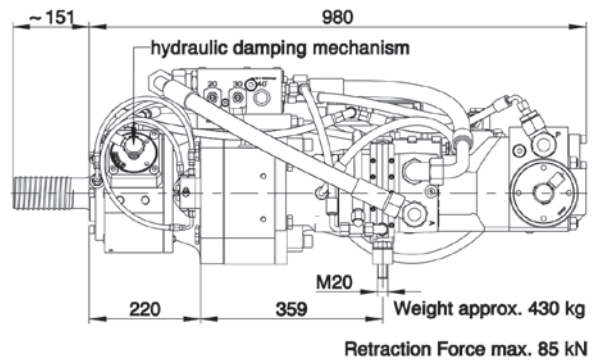
KRUPP Drifter HB45

Compact design – the ideal drifter (hammer drill) for mid-size drill rigs and excavator mounted drill masts.



- Especially developed for overburden drilling, drive drilling, threaded self-drilling anchors and micropiles.
- Casing diameter up to 133 mm (5 inch) and threaded hollow bars up to a diameter of 73 mm (3 inch).
- The standard built-in rubber damping mechanism improves retraction of casings and rods and avoids blank impacts.
- Optional: electric, hydraulic or manual changeover for the rotary drive speed and for the frequency of the percussion mechanism.
- Options: hydraulic operated damping mechanism, external flushing head, central lubrication system and integrated RPM sensor.

Main Dimensions



Rotary Drives

Motor-Version 670 ccm (single-speed)																	
Pressure at rotary drive		70 bar				140 bar				170 bar				205 bar			
Gear			2 nd		1 st		2 nd		1 st		2 nd		1 st		2 nd		1 st
Oil flow rate (lpm)	90	Torque (Nm)	1,500		3,200		3,200		6,400		4,000		8,100		4,800		9,700
		Speed (rpm)	56		27		55		26		53		25		52		24
	150	Torque (Nm)	1,500		3,100		3,100		6,400		3,900		8,000				9,600
		Speed (rpm)	95		47		93		45		92		44				43
	170	Torque (Nm)	1,500		3,100		3,100		6,400		3,900		8,000				9,600
		Speed (rpm)	107		52		105		51		104		52				48

1st gear (parallel mode), 2nd gear (serial mode)

■ Intermittend mode (max. 10% per minute)

Motor-Version HP677 ccm (single-speed)																	
Pressure at rotary drive		140 bar				200 bar				240 bar				280 bar			
Gear			2 nd		1 st		2 nd		1 st		2 nd		1 st		2 nd		1 st
Oil flow rate (lpm)	90	Torque (Nm)	2,900		6,300		4,400		9,400		5,300		11,100		6,200		13,000
		Speed (rpm)	60		30		60		30		60		30		60		30
	150	Torque (Nm)	2,400		5,900		3,900		9,000		4,800		10,700		5,700		12,600
		Speed (rpm)	100		50		100		50		100		50		100		50
	170	Torque (Nm)	2,200		5,700		3,700		8,800		4,600		10,500		5,500		12,400
		Speed (rpm)	114		57		114		57		114		57		114		57

1st gear (parallel mode), 2nd gear (serial mode)

Motor-Version HP677 ccm (2-speed) (standard)																		
Pressure at rotary drive			140 bar				200 bar				240 bar				280 bar			
Gear			4 th	3 rd	2 nd	1 st	4 th	3 rd	2 nd	1 st	4 th	3 rd	2 nd	1 st	4 th	3 rd	2 nd	1 st
Oil flow rate (lpm)	90	Torque (Nm)	1,800	2,900	4,100	6,300	2,800	4,400	6,200	9,400	3,400	5,300	7,300	11,100	4,000	6,200	8,600	13,000
		Speed (rpm)	90	60	45	30	90	60	45	30	90	60	45	30	90	60	45	30
	150	Torque (Nm)	1,200	2,400	3,800	5,900	2,300	3,900	5,900	9,000	2,800	4,800	7,000	10,700	3,500	5,700	8,300	12,600
		Speed (rpm)	150	100	75	50	150	100	75	50	150	100	75	50	150	100	75	50
	170	Torque (Nm)	1,000	2,200	3,700	5,700	2,100	3,700	5,700	8,800	2,600	4,600	6,800	10,500	3,200	5,500	8,100	12,400
		Speed (rpm)	170	114	85	57	170	114	85	57	170	114	85	57	170	114	85	57

1st gear (parallel mode), 2nd gear (parallel + 2-speed mode), 3rd gear (serial mode), 4th gear (serial + 2-speed mode)

Motor-Version HP940 ccm (2-speed)																		
Pressure at rotary drive			140 bar				170 bar				200 bar				240 bar			
Gear			4 th	3 rd	2 nd	1 st	4 th	3 rd	2 nd	1 st	4 th	3 rd	2 nd	1 st	4 th	3 rd	2 nd	1 st
Oil flow rate (lpm)	90	Torque (Nm) Speed (rpm)	2,600 62	4,200 41	6,000 31	9,200 21	3,300 62	5,200 41	7,400 31	11,300 21	4,100 62	6,500 41	9,000 31	13,700 21	4,900 62	7,700 41	10,600 31	16,200 21
	150	Torque (Nm) Speed (rpm)	1,800 103	3,500 68	5,600 51	8,700 34	2,500 103	4,500 68	7,000 51	10,800 34	3,300 103	5,800 68	8,600 51	13,200 34	4,100 103	7,000 68	10,200 51	15,700 34
	170	Torque (Nm) Speed (rpm)	1,500 116	3,200 78	5,400 58	8,400 39	2,200 116	4,200 78	6,800 58	10,500 39	3,000 116	5,500 78	8,400 58	12,900 39	3,800 116	6,700 78	10,000 58	15,400 39

1st gear (parallel mode), 2nd gear (parallel + 2-speed mode), 3rd gear (serial mode), 4th gear (serial + 2-speed mode)

Other motor versions are available

Percussion Unit

Operating pressure (kp/cm ²)	180 - 200 bar
Oil flow rate (l/min)	70 - 90 lpm
Impact rate (min ⁻¹)	1,200 / 1,800 / 2,500 bpm
Single impact energy (Joule)	590 / 400 / 340 Nm

Shank Adaptors (Striker Bars)

Male thread	R55 (H55) left, R55 (H55) right
	C64 left, C64 right (standard)
Other shank adaptors (striker bars) are available	

Materials Services
Infrastructure

thyssenkrupp Infrastructure GmbH
Alte Liederbacher Str. 6
36304 Alsfeld, Germany
P: +49 6631 781-0
F: +49 6631 781-113
machinery.tkinfrastructure@thyssenkrupp.com
www.thyssenkrupp-infrastructure.com