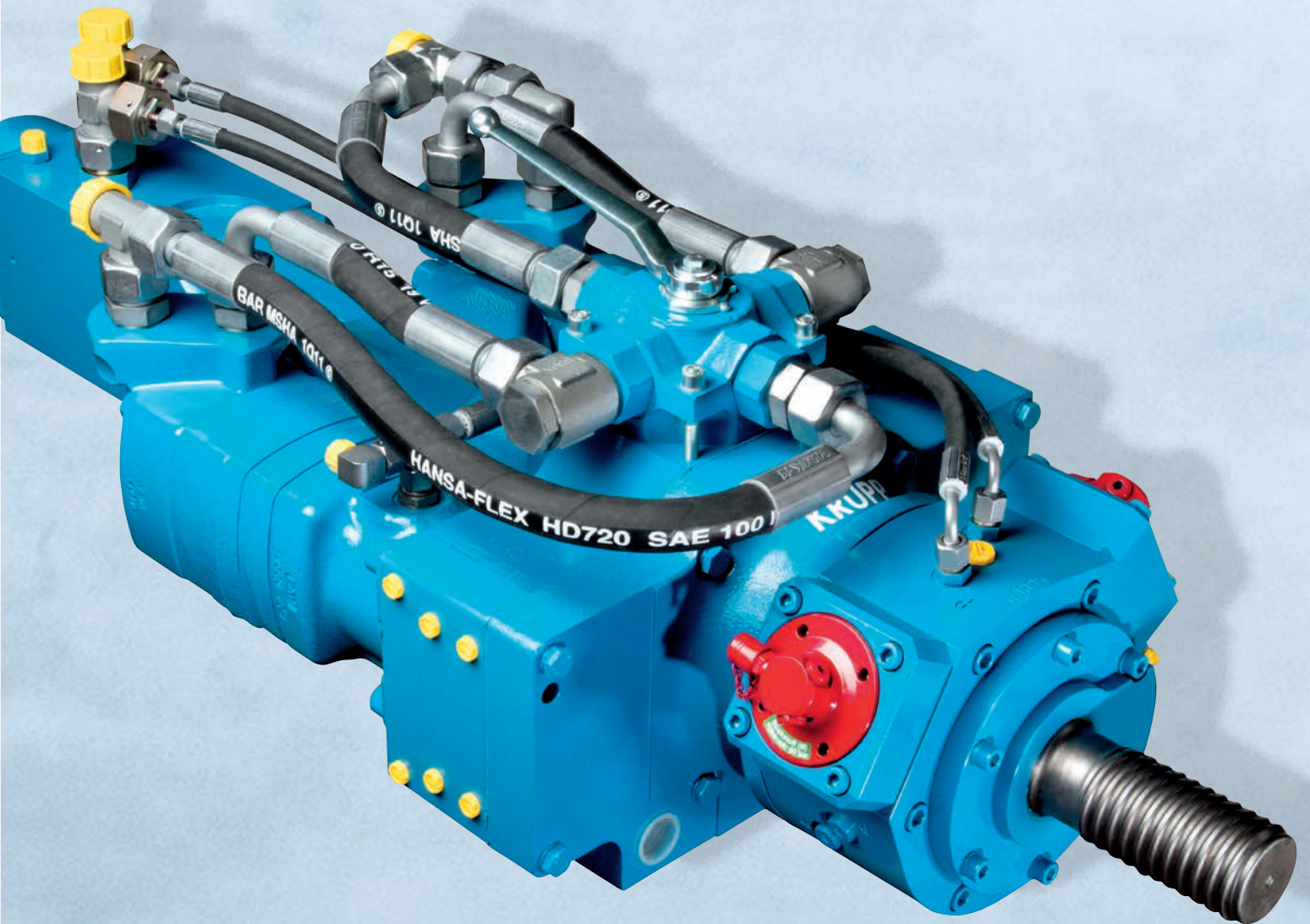


Materials Services  
Infrastructure

# KRUPP Drifter HB40.

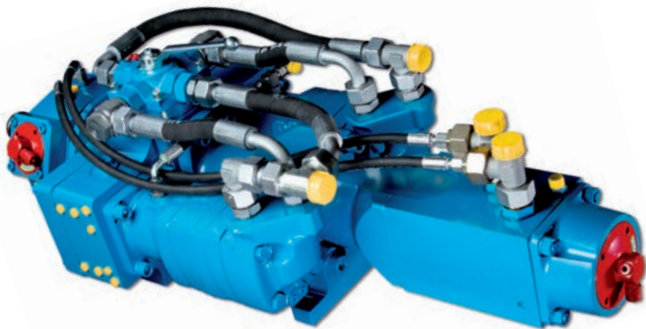


thyssenkrupp



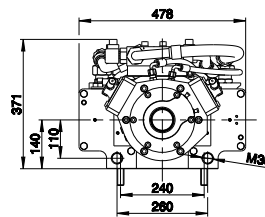
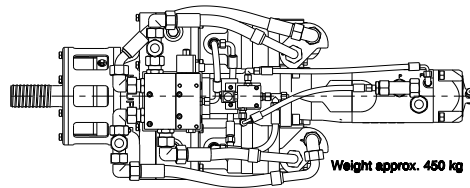
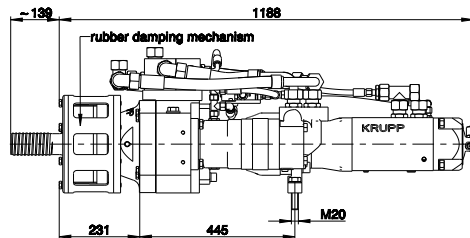
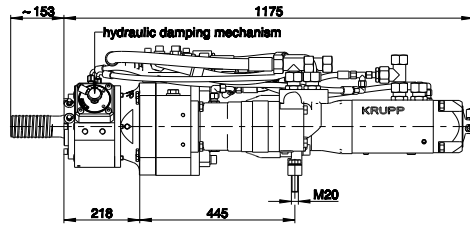
# KRUPP Drifter HB40

Compact design – the ideal drifter (hammer drill) for smaller and mid-size drill rigs and excavator mounted drill masts.

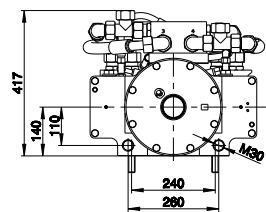


- Especially developed for casing drilling, threaded self-drilling anchors and micropiles.
- Casing diameter up to 133 mm (5 inch) and threaded hollow bars up to a diameter of 73 mm (3 inch).
- The standard built-in rubber damping mechanism improves retraction of casings and rods and avoids blank impacts.
- Optional: electric, hydraulic or manual changeover for the rotary drive speed and for the percussion mechanism frequency.
- Options: hydraulic operated damping mechanism, external flushing head and central lubrication system.

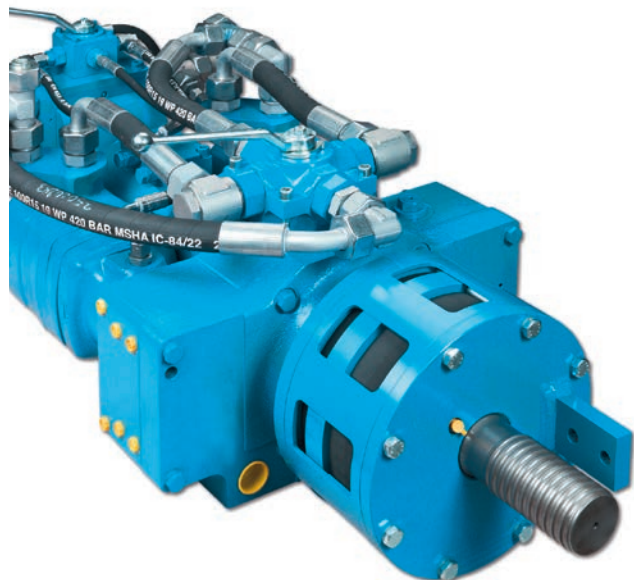
## Main Dimensions



Retraction Force max. 85 kN



Retraction Force max. 120 kN



## Rotary Drives

Motor-Version 670 ccm (standard)																			
Pressure at rotary drive		70 bar				140 bar				170 bar				205 bar					
Gear		2 <sup>nd</sup>		1 <sup>st</sup>		2 <sup>nd</sup>		1 <sup>st</sup>		2 <sup>nd</sup>		1 <sup>st</sup>		2 <sup>nd</sup>		1 <sup>st</sup>			
Oil flow rate (lpm)	90	Torque (Nm)	1,500	3,200	3,200	6,400	4,000	8,100	4,800	9,700	Torque (Nm)	1,500	3,100	3,100	6,400	3,900	8,000	4,800	9,700
		Speed (rpm)	56	27	55	26	53	25	52	24		56	27	55	26	53	25	52	24
	150	Torque (Nm)	1,500	3,100	3,100	6,400	3,900	8,000		9,600	Torque (Nm)	1,500	3,100	3,100	6,400	3,900	8,000		9,600
	Speed (rpm)	95	47	93	45	92	44		43		95	47	93	45	92	44		43	
	170	Torque (Nm)	1,500	3,100	3,100	6,400	3,900	8,000		9,600	Torque (Nm)	1,500	3,100	3,100	6,400	3,900	8,000		9,600
	Speed (rpm)	107	52	105	51	104	52		48		107	52	105	51	104	52		48	

1<sup>st</sup> gear (parallel mode), 2<sup>nd</sup> gear (serial mode)

■ Intermittend mode (max. 10% per minute)

Motor-Version HP677 ccm (single-speed)																			
Pressure at rotary drive		140 bar				200 bar				240 bar				280 bar					
Gear		2 <sup>nd</sup>		1 <sup>st</sup>		2 <sup>nd</sup>		1 <sup>st</sup>		2 <sup>nd</sup>		1 <sup>st</sup>		2 <sup>nd</sup>		1 <sup>st</sup>			
Oil flow rate (lpm)	90	Torque (Nm)	3,000	6,600	4,700	9,900	5,500	11,600	6,500	13,600	Torque (Nm)	3,000	6,600	4,700	9,900	5,500	11,600	6,500	13,600
		Speed (rpm)	57	29	57	29	57	29	57	29		57	29	57	29	57	29	57	29
	150	Torque (Nm)	2,500	6,200	4,100	9,500	5,000	11,300	6,000	13,300	Torque (Nm)	2,500	6,200	4,100	9,500	5,000	11,300	6,000	13,300
	Speed (rpm)	95	48	95	48	95	48	95	48		95	48	95	48	95	48	95	48	
	170	Torque (Nm)	2,300	6,100	3,900	9,300	4,800	11,100	5,800	13,100	Torque (Nm)	2,300	6,100	3,900	9,300	4,800	11,100	5,800	13,100
	Speed (rpm)	108	54	108	54	108	54	108	54		108	54	108	54	108	54	108	54	

1<sup>st</sup> gear (parallel mode), 2<sup>nd</sup> gear (parallel + 2-speed mode), 3<sup>rd</sup> gear (serial mode), 4<sup>th</sup> gear (serial + 2-speed mode)

Motor-Version HP677 ccm (2-speed)																		
Pressure at rotary drive		140 bar				200 bar				240 bar				280 bar				
Gear		4 <sup>th</sup>	3 <sup>rd</sup>	2 <sup>nd</sup>	1 <sup>st</sup>	4 <sup>th</sup>	3 <sup>rd</sup>	2 <sup>nd</sup>	1 <sup>st</sup>	4 <sup>th</sup>	3 <sup>rd</sup>	2 <sup>nd</sup>	1 <sup>st</sup>	4 <sup>th</sup>	3 <sup>rd</sup>	2 <sup>nd</sup>	1 <sup>st</sup>	
Oil flow rate (lpm)	90	Torque (Nm)	1,900	3,000	4,300	6,600	2,900	4,700	6,500	9,900	3,500	5,500	7,700	11,600	4,200	6,500	9,000	13,600
		Speed (rpm)	86	57	43	29	86	57	43	29	86	57	43	29	86	57	43	29
	150	Torque (Nm)	1,300	2,500	4,000	6,200	2,400	4,100	6,200	9,500	3,000	5,000	7,400	11,300	3,600	6,000	8,700	13,300
	Speed (rpm)	143	95	71	48	143	95	71	48	143	95	71	48	143	95	71	48	
	170	Torque (Nm)	1,100	2,300	3,900	6,100	2,200	3,900	6,000	9,300	2,700	4,800	7,200	11,100	3,400	5,800	8,500	13,100
	Speed (rpm)	162	108	81	54	162	108	81	54	162	108	81	54	162	108	81	54	

1<sup>st</sup> gear (parallel mode), 2<sup>nd</sup> gear (parallel + 2-speed mode), 3<sup>rd</sup> gear (serial mode), 4<sup>th</sup> gear (serial + 2-speed mode)

### Other motor versions are available

### Percussion Unit

Operating pressure (kp/cm <sup>2</sup> )	170 - 190 bar
Oil flow rate (l/min)	70 - 90 lpm
Impact rate (min <sup>-1</sup> )	1800 / 2500 bpm
Single impact energy (Joule)	400 / 340 Nm

### Shank Adaptors (Striker Bars)

Male thread	C64 left, C64 right (standard)
	R55 (H55) left, R55 (H55) right
Other shank adaptors (striker bars) are available	

Materials Services  
Infrastructure

thyssenkrupp Infrastructure GmbH  
Alte Liederbacher Str. 6  
36304 Alsfeld, Germany  
P: +49 6631 781-0  
F: +49 6631 781-113  
[machinery.tkinfrastructure@thyssenkrupp.com](mailto:machinery.tkinfrastructure@thyssenkrupp.com)  
[www.thyssenkrupp-infrastructure.com](http://www.thyssenkrupp-infrastructure.com)