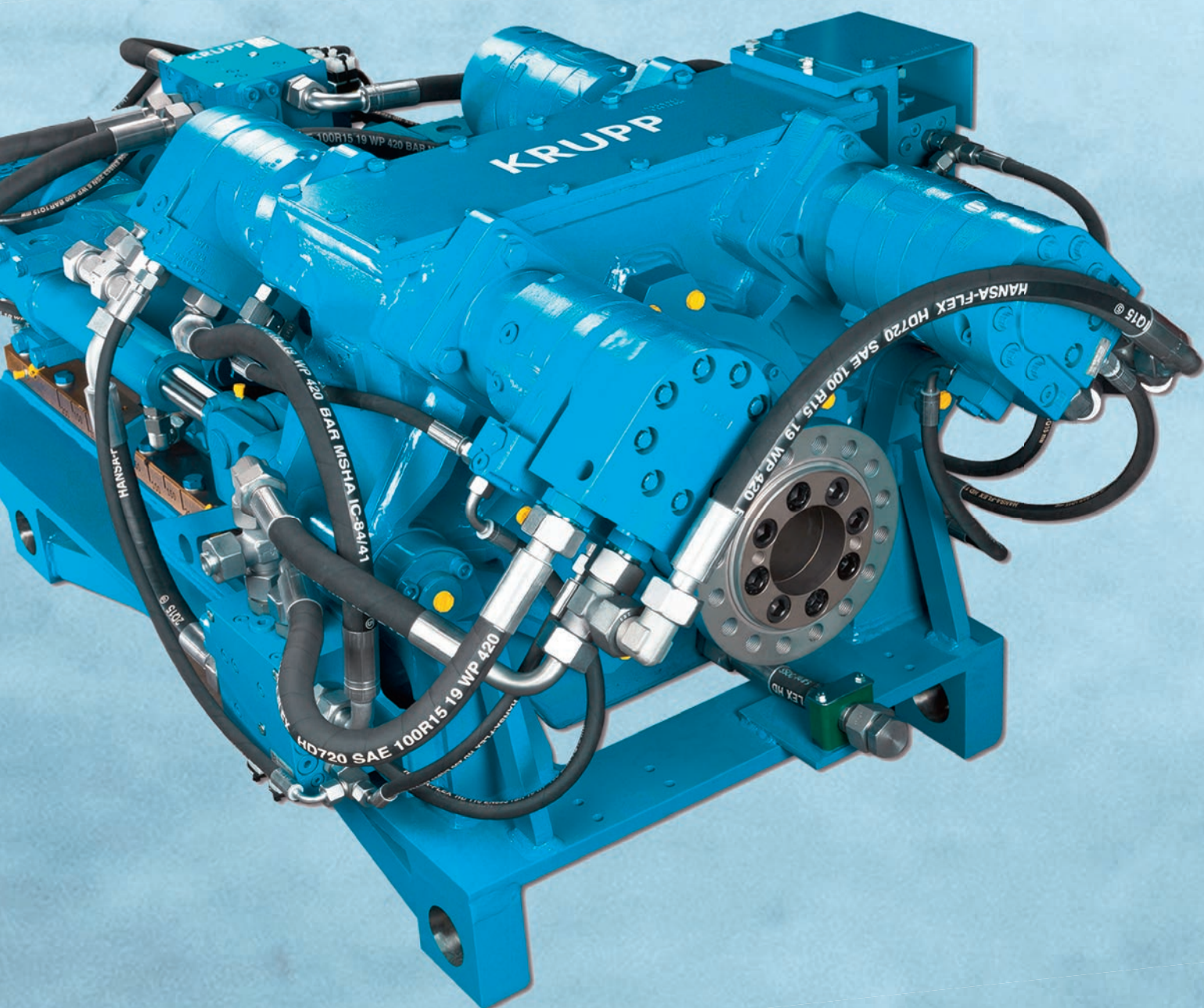


Materials Services
Infrastructure

KRUPP Double Head HR55-HR40.



thyssenkrupp

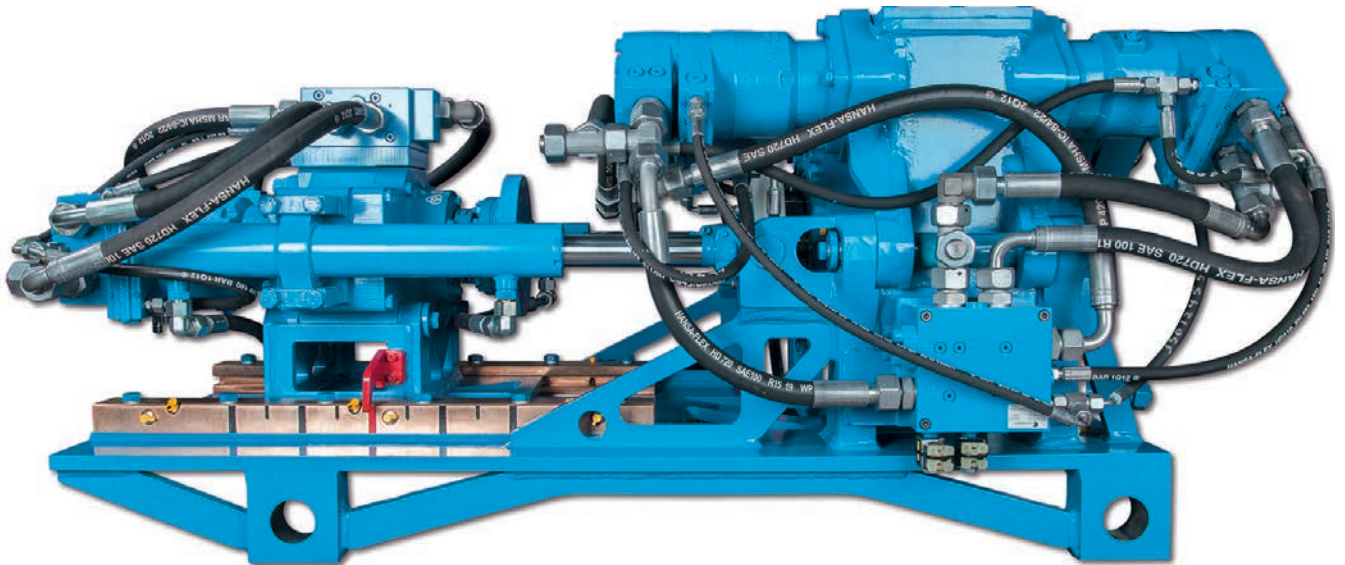
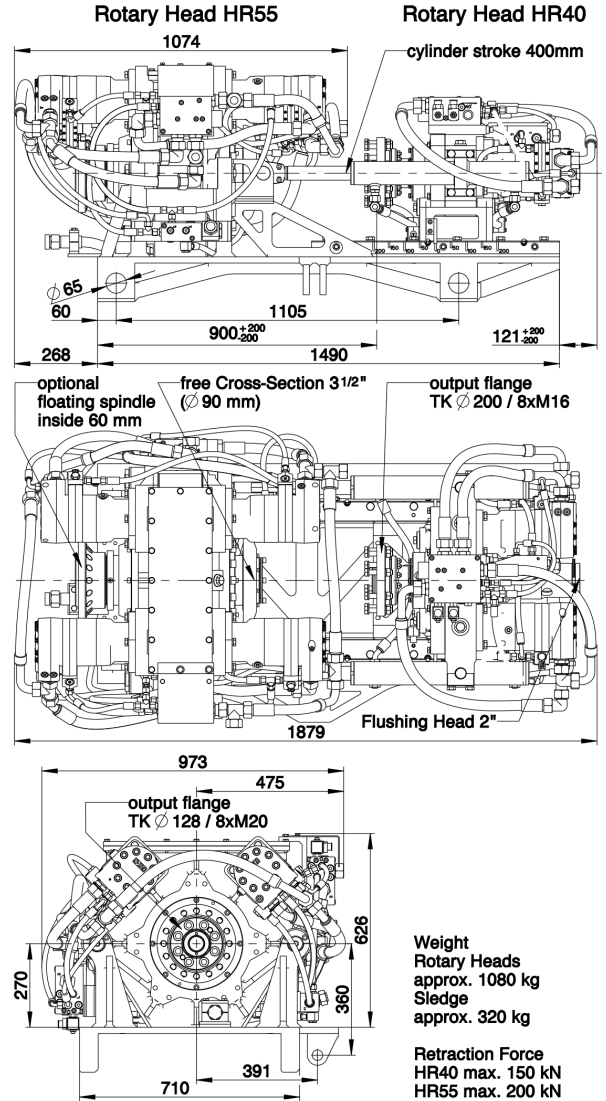


KRUPP Double Head System HR55-HR40

Compact design – the ideal double rotary system assembled to one sledge plate for larger drill rigs.

- Double head drilling unit HR55-HR40 designed for geothermal and overburden drilling up to a depth of 200 m.
- Very compact design with minimum dimensions but maximum torque and both rotary heads are mounted to one single sledge plate.
- Thread-caring assembly and disassembly of the drilling rods by a new floating spindle integrated in the HR 55 rotary head, with a relative adjustment of 60 mm (+/-30 mm) as Option.
- With cylinders arranged between the rotary heads a relative adjustment between outer casing and inner rod of 400 mm (+/-200 mm) is standard, up to 1000 mm (+/-500 mm) is possible as Option.
- Counter-rotating of inner rod and outer casing allow precise drillings and consequently guarantee the verticality of the earth probes for geothermal drilling.
- Casing diameter up to 300 mm (12 inch).
- Optional: electric or hydraulic changeover of the rotary drive speed.
- Options: top flushing head, discharge ejection bell, integrated RPM sensors, floating spindle integrated in HR55, central lubrication system, longer relative adjustment between the rotary heads.

Main Dimensions



Rotary Drives HR55 (for outside casings)

Motor-Version 2x HP480 ccm + 2x HP677 ccm

Pressure at rotary drive			170 bar				200 bar				240 bar				280 bar			
Gear			4 th	3 rd	2 nd	1 st	4 th	3 rd	2 nd	1 st	4 th	3 rd	2 nd	1 st	4 th	3 rd	2 nd	1 st
Oil flow rate (lpm)	170	Torque (Nm) Speed (rpm)	7,100 48	10,900 35	14,800 26	23,600 19	8,600 48	13,200 35	17,900 26	28,200 19	10,600 48	16,200 35	21,900 26	34,200 19	12,700 48	19,300 35	26,000 26	40,300 19
	260	Torque (Nm) Speed (rpm)	5,100 75	8,300 51	11,700 41	20,600 27	6,700 75	10,500 51	14,800 41	25,200 27	8,700 75	13,600 51	18,800 41	31,300 27	10,700 75	16,600 51	22,900 41	37,400 27
	340	Torque (Nm) Speed (rpm)	4,100 97	6,800 66	10,100 53	19,000 36	5,600 97	9,100 66	13,100 53	23,600 36	7,600 97	12,100 66	17,200 53	29,700 36	9,600 97	15,200 66	21,200 53	35,800 36

1st gear (parallel mode), 2nd gear (parallel + 2-speed mode), 3rd gear (serial mode), 4th gear (serial + 2-speed mode)

Motor-Version 4x HP677 ccm (standard)

Pressure at rotary drive			170 bar				200 bar				240 bar				280 bar			
Gear			4 th	3 rd	2 nd	1 st	4 th	3 rd	2 nd	1 st	4 th	3 rd	2 nd	1 st	4 th	3 rd	2 nd	1 st
Oil flow rate (lpm)	170	Torque (Nm) Speed (rpm)	8,700 41	13,300 30	18,000 23	28,200 16	10,400 41	16,000 30	21,600 23	33,500 16	12,800 41	19,500 30	26,400 23	40,600 16	15,200 41	23,100 30	31,100 23	47,800 16
	260	Torque (Nm) Speed (rpm)	6,800 64	10,900 43	15,300 35	25,400 23	8,600 64	13,500 43	18,800 35	30,700 23	11,000 64	17,100 43	23,600 35	37,900 23	13,400 64	20,700 43	28,300 35	45,000 23
	340	Torque (Nm) Speed (rpm)	5,800 83	9,500 57	13,800 45	23,900 31	7,600 83	12,200 57	17,300 45	29,200 31	10,000 83	15,800 57	22,100 45	36,400 31	12,300 83	19,300 57	26,800 45	43,500 31

1st gear (parallel mode), 2nd gear (parallel + 2-speed mode), 3rd gear (serial mode), 4th gear (serial + 2-speed mode)

Motor-Version 2x HP677 ccm + 2x HP940 ccm

Pressure at rotary drive			170 bar				200 bar				230 bar							
Gear			4 th	3 rd	2 nd	1 st	4 th	3 rd	2 nd	1 st	4 th	3 rd	2 nd	1 st				
Oil flow rate (lpm)	170	Torque (Nm) Speed (rpm)	9,900 35	15,200 25	20,800 19	33,000 13	12,100 35	18,400 25	25,000 19	39,300 13	14,200 35	21,600 25	29,300 19	45,700 13				
	260	Torque (Nm) Speed (rpm)	7,200 53	11,500 36	16,400 29	28,800 20	9,300 53	14,700 36	20,700 29	35,200 20	11,400 53	17,900 36	24,900 29	41,600 20				
	340	Torque (Nm) Speed (rpm)	5,700 70	9,500 47	14,100 38	26,600 26	7,800 70	12,700 47	18,300 38	33,000 26	9,900 70	15,900 47	22,600 38	39,300 26				

1st gear (parallel mode), 2nd gear (parallel + 2-speed mode), 3rd gear (serial mode), 4th gear (serial + 2-speed mode)

Motor-Version 4x HP940 ccm

Pressure at rotary drive			170 bar				200 bar				230 bar							
Gear			4 th	3 rd	2 nd	1 st	4 th	3 rd	2 nd	1 st	4 th	3 rd	2 nd	1 st				
Oil flow rate (lpm)	170	Torque (Nm) Speed (rpm)	12,000 30	18,400 22	25,100 16	39,100 12	14,500 30	22,100 22	30,000 16	46,500 12	17,000 30	25,900 22	35,000 16	53,900 12				
	260	Torque (Nm) Speed (rpm)	9,500 46	15,100 31	21,200 25	35,300 17	12,000 46	18,800 31	26,200 25	42,700 17	14,400 46	22,500 31	31,100 25	50,100 17				
	340	Torque (Nm) Speed (rpm)	8,100 60	13,200 41	19,100 33	33,200 22	10,600 60	17,000 41	24,100 33	40,600 22	13,000 60	20,700 41	29,000 33	48,000 22				

1st gear (parallel mode), 2nd gear (parallel + 2-speed mode), 3rd gear (serial mode), 4th gear (serial + 2-speed mode)

Other motor versions are available

Options

Top discharge preventer and ejection bell

Floating spindle of 60mm integrated in HR55

Drill rods, casings, bits, augers

Rotary Drives HR40 (for inner rods)

Motor-Version 2x HP480 ccm																		
Pressure at rotary drive		140 bar				200 bar				240 bar				280 bar				
Gear		4 th	3 rd	2 nd	1 st	4 th	3 rd	2 nd	1 st	4 th	3 rd	2 nd	1 st	4 th	3 rd	2 nd	1 st	
Oil flow rate (lpm)	90	Torque (Nm) Speed (rpm)	1,300 121	2,100 80	3,100 60	4,700 40	2,100 121	3,300 80	4,600 60	7,000 40	2,500 121	3,900 80	5,400 60	8,300 40	3,000 121	4,600 80	6,400 60	9,700 40
	150	Torque (Nm) Speed (rpm)	900 201	1,800 134	2,800 101	4,400 67	1,700 201	2,900 134	4,400 101	6,700 67	2,100 201	3,600 134	5,200 101	8,000 67	2,600 201	4,300 134	6,200 101	9,400 67
	170	Torque (Nm) Speed (rpm)	800 228	1,600 152	2,700 114	4,300 76	1,500 228	2,800 152	4,300 114	6,600 76	1,900 228	3,400 152	5,100 114	7,900 76	2,400 228	4,100 152	6,100 114	9,300 76

1st gear (parallel mode), 2nd gear (parallel + 2-speed mode), 3rd gear (serial mode), 4th gear (serial + 2-speed mode)

Motor-Version 2x HP677 ccm (standard)																		
Pressure at rotary drive			140 bar				200 bar				240 bar				280 bar			
Gear			4 th	3 rd	2 nd	1 st	4 th	3 rd	2 nd	1 st	4 th	3 rd	2 nd	1 st	4 th	3 rd	2 nd	1 st
Oil flow rate (lpm)	90	Torque (Nm)	1,900	3,000	4,300	6,600	2,900	4,700	6,500	9,900	3,500	5,500	7,700	11,600	4,200	6,500	9,000	13,600
		Speed (rpm)	86	57	43	29	86	57	43	29	86	57	43	29	86	57	43	29
	150	Torque (Nm)	1,300	2,500	4,000	6,200	2,400	4,100	6,200	9,500	3,000	5,000	7,400	11,300	3,600	6,000	8,700	13,300
		Speed (rpm)	143	95	71	48	143	95	71	48	143	95	71	48	143	95	71	48
	170	Torque (Nm)	1,100	2,300	3,900	6,100	2,200	3,900	6,000	9,300	2,700	4,800	7,200	11,100	3,400	5,800	8,500	13,100
		Speed (rpm)	162	108	81	54	162	108	81	54	162	108	81	54	162	108	81	54

1st gear (parallel mode), 2nd gear (parallel + 2-speed mode), 3rd gear (serial mode), 4th gear (serial + 2-speed mode)

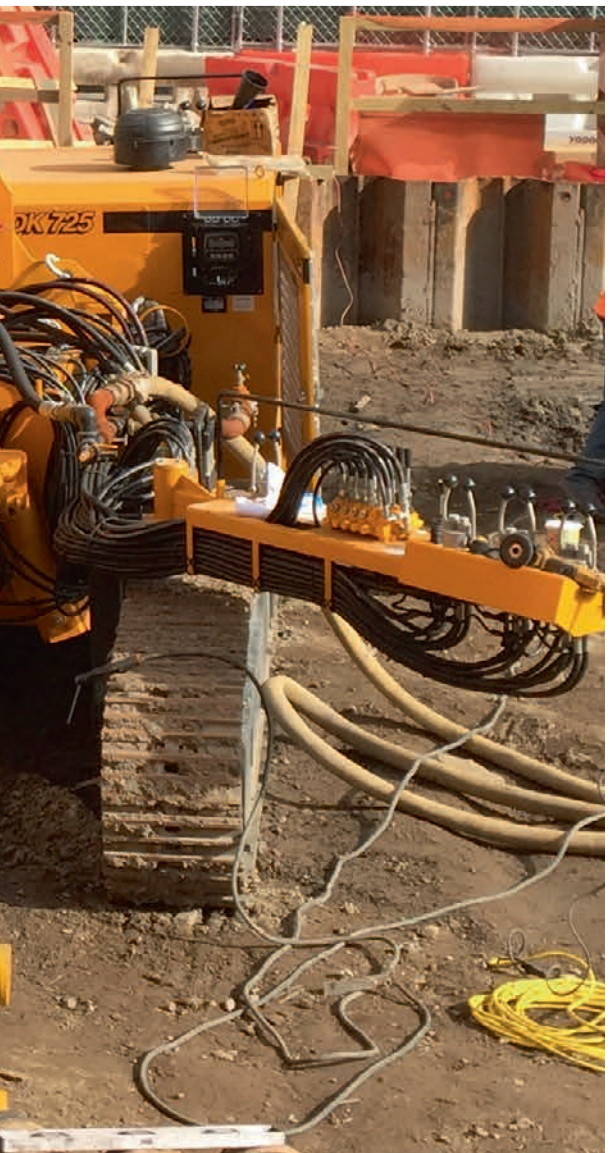
Motor-Version 2x HP940 ccm																		
Pressure at rotary drive		170 bar				200 bar				230 bar								
Gear		4 th	3 rd	2 nd	1 st	4 th	3 rd	2 nd	1 st	4 th	3 rd	2 nd	1 st					
Oil flow rate (lpm)	90	Torque (Nm) Speed (rpm)	3,300 62	5,200 41	7,400 31	11,300 21	4,100 62	6,500 41	9,000 31	13,700 21	4,700 62	7,300 41	10,200 31	15,500 21				
	150	Torque (Nm) Speed (rpm)	2,500 103	4,500 68	7,000 51	10,800 34	3,300 103	5,800 68	8,600 51	13,200 34	3,900 103	6,600 68	9,800 51	15,000 34				
	170	Torque (Nm) Speed (rpm)	2,200 116	4,200 78	6,800 58	10,500 39	3,000 116	5,500 78	8,400 58	12,900 39	3,600 116	6,300 78	9,500 58	14,700 39				

1st gear (parallel mode), 2nd gear (parallel + 2-speed mode), 3rd gear (serial mode), 4th gear (serial + 2-speed mode)

Other motor versions are available

Options

2" top flushing head for HR40 rotary head
Balancing rod between the rotary heads
Flange adaptors for balancing rod



Materials Services
Infrastructure

thyssenkrupp Infrastructure GmbH
Alte Liederbacher Str. 6
36304 Alsfeld, Germany
P: +49 6631 781-0
F: +49 6631 781-113
machinery.tkinfrastructure@thyssenkrupp.com
www.thyssenkrupp-infrastructure.com