



techniwell

JET-GROUTING, GROUTING AND DRILLING EQUIPMENT



TW 700

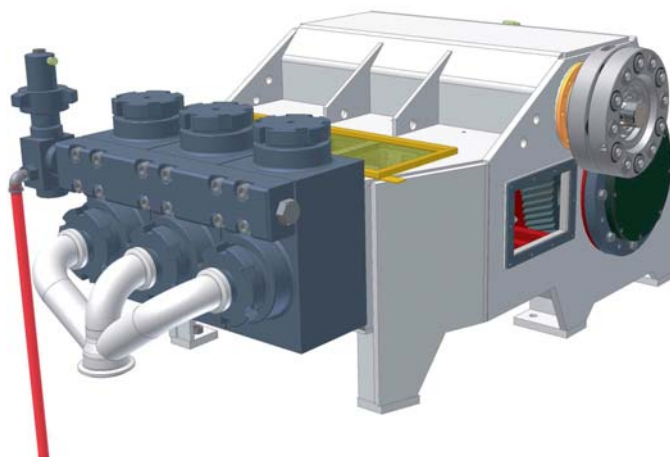
POMPA TRIPLEX ALTA PRESSIONE
HIGH PRESSURE TRIPLEX PUMP

A LAYNE CHRISTENSEN COMPANY



Dimensioni corpo pompa TW 700
Bare shaft TW 700 pump dimensions

Larghezza / Width 1.600 mm
 Lunghezza / Length 2.080 mm
 Altezza / Height 1.030 mm



Principali caratteristiche modello TW 700 / Main features of model TW 700

Pressione massima / Maximum pressure 900bar // 90 MPa (13.050 psi)
 Portata massima / Maximum flow rate 875 lit/min (267 gpm)
 Potenza massima / Diesel engine power 700 HP
 Diametro pistoni / Piston diameter 88,9 mm (3 1/2 ") - 101,6 mm (4") - 114,3 mm (4 1/2 ") - 127,0 mm (5")
 Corsa pistoni / Piston stroke 177.8 mm (7")
 Colpi massimi / Maximum stroke rate 130 /min (130 spm)
 Diametro aspirazione / Suction diameter 127.0 mm (5")
 Diametro mandata / High pressure output diameter 50 mm (2")

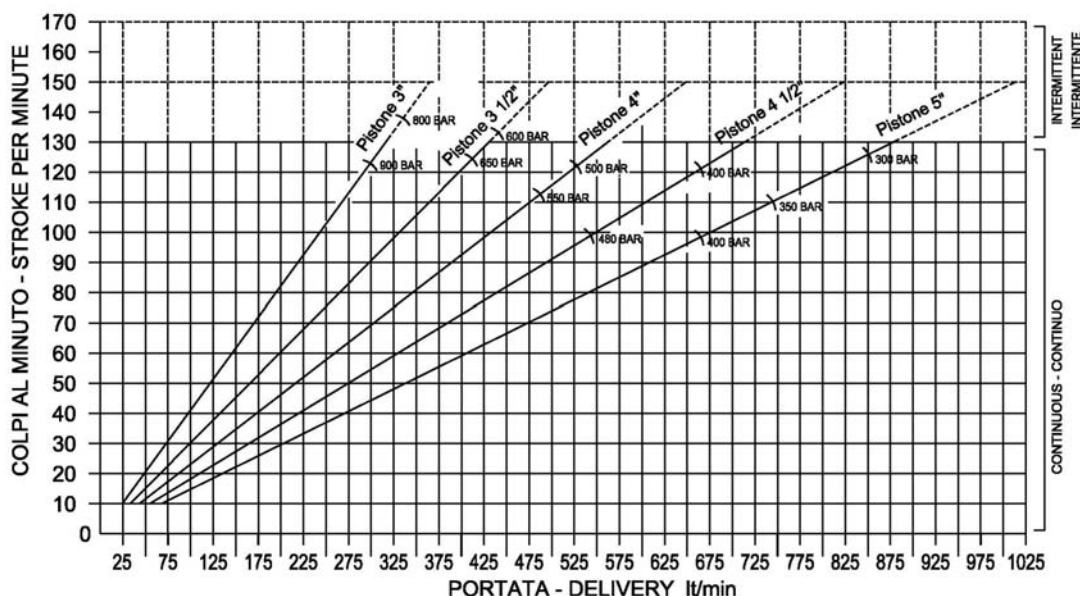
Trasmissione con sistema a doppio pignone e corona di tipo elicoidale
 Transmission system with double pinion and crown helical gears

Pannello di comando con monitor "touch screen"
 Control panel with "touch screen" monitor

Dimensioni e peso / Overall dimensions and weight

Larghezza / Width 2.438 mm (8')
 Lunghezza / Length 6.450 mm (21' 2")
 Altezza / Height 2.591 mm (8' 6")
 Peso / Weight 15.000 Kg (33.070 lb)

DIAGRAMMA PRESTAZIONI (PRELIMINARE) - PERFORMANCE DIAGRAM (PRELIMINARY)



		ENGINE RPM		
		1400	1600	1800
GEAR	PUMP SPM			
1 ^a	31 36 40			
2 ^a	40 46 51			
3 ^a	52 59 67			
4 ^a	66 76 85			
5 ^a	82 94 106			
6 ^a	108 123 138			
7 ^a	142 163 183			

Preliminary



Tecniwell S.r.l. - Via I° Maggio, 61 - 29027 Podenzano (PC) Italy
 T +39 0523 524086 - F +39 0523 524088
 E mail:info@tecniwell.com - http://www.tecniwell.com

Certified UNI EN ISO 9001:2008 by DNV. Tutti i dati tecnici sono indicativi e la Tecniwell S.r.l. si riserva la facoltà di modificarli opportunamente / All technical data are purely indicative and subject to change without notice. (Ed. 1/2011)