



techniwell

JET-GROUTING, GROUTING AND DRILLING EQUIPMENT

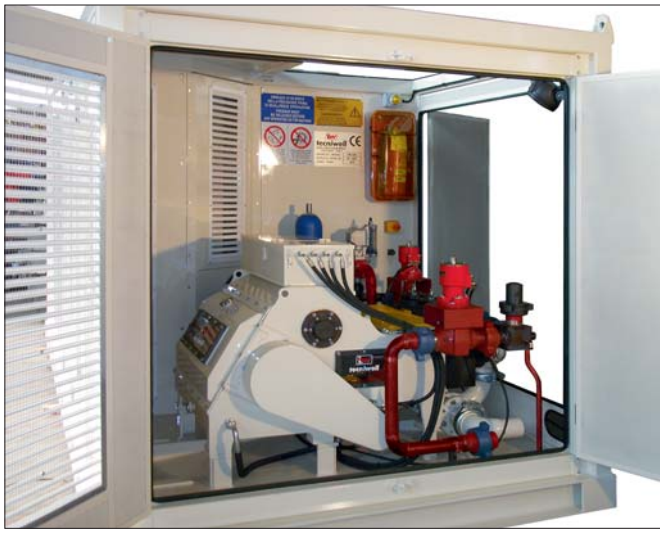


TW 200

POMPA TRIPLEX
ALTA PRESSIONE
HIGH PRESSURE
TRIPLEX PUMP

A LAYNE CHRISTENSEN COMPANY



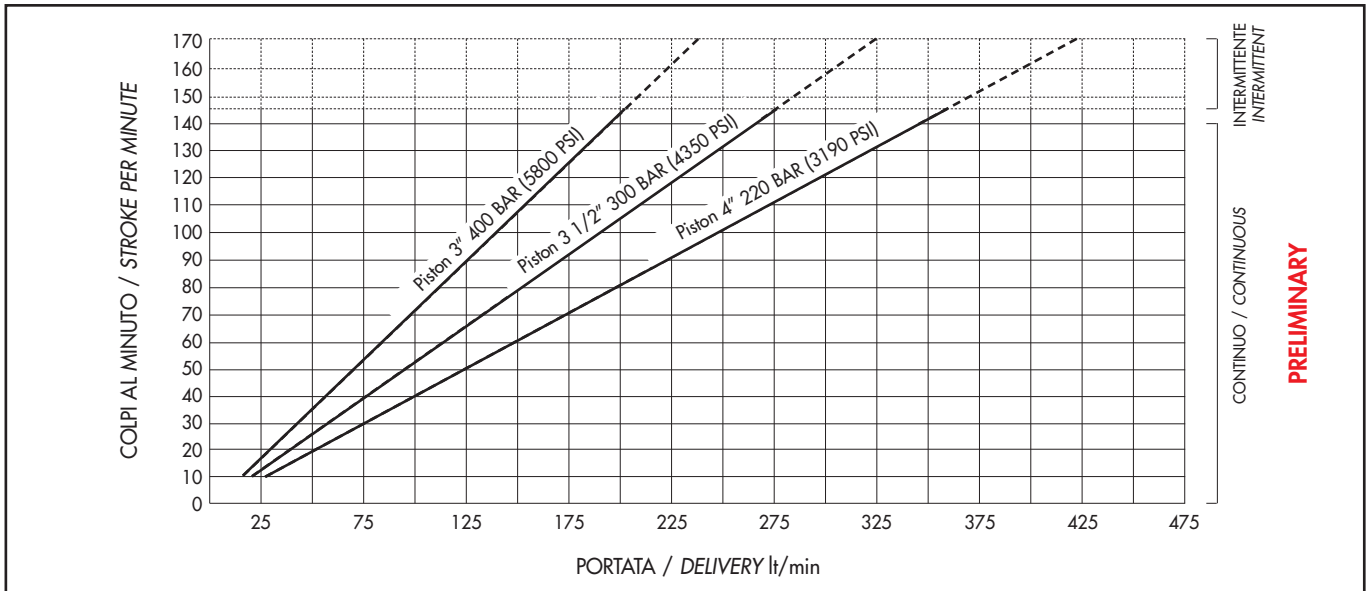


Principali caratteristiche modello TW200 / Main features of model TW200

Pressione massima / <i>Maximum pressure</i>	400 bar/40 MPa (5800 psi)
Portata massima / <i>Maximum flow rate</i>	360 lit/min (95 gpm)
Potenza / <i>Diesel engine power</i>	200 HP
Diametro pistoni / <i>Piston diameter</i>	76,2 mm (3") - 88,9 mm (3" 1/2) - 101,6 mm (4")
Corsa pistoni / <i>Piston stroke</i>	101.6 mm (4")
Colpi / <i>Stroke rate</i>	145/min
Diametro aspirazione / <i>Suction diameter</i>	76,2 mm (3")
Diametro mandata / <i>High pressure output diameter</i>	50,8 mm (2")

Dimensioni e peso / Overall dimensions and weight

Larghezza / <i>Width</i>	Lunghezza / <i>Length</i>	Altezza / <i>Height</i>	Peso / <i>Weight</i>
2.400 mm (7' 10")	4.800 mm (15' 9")	2.400 mm (7' 10")	9.200 Kg (20.280 lb)



Versione allestita con sistema di valvole di scambio acqua/cemento per gestione fase di perforazione con martello fondo foro ad acqua e fase di iniezione jet-grouting.
 Version fitted with water/cement "swap" system for the managing of the drilling phase with DTH water-hammer and the jet-grouting injection phase.

tecniwell
 JET-GROUTING, GROUTING AND DRILLING EQUIPMENT

Tecniwell S.r.l. - Via I° Maggio, 61 - 29027 Podenzano (PC) Italy
 T +39 0523 524086 - F +39 0523 524088
 E mail: info@tecniwell.com - http://www.tecniwell.com

